

The following information is from:

Susan Klossner, BSN, PHN
Family Health Visiting Supervisor
Brown County Public Health
May 14, 2021

VACCINATION CLINIC INFORMATION

TO MAKE AN APPOINTMENT USE THE LINKS BELOW

Here are the links for the clinics for next week for the public:

<https://PublicHealthImmunizations.as.me/May21-1stDose> - **Moderna** vaccine - 2nd dose is on June 18th – must be 18 years of age or older

<https://PublicHealthImmunizations.as.me/May22> - **Pfizer** vaccine - 2nd dose is on June 12th – must be 12 years of age or older, if under 18 years of age, a parent must be present at the time of vaccination

OR CALL 507-233-6820 for an appointment

Adolescent COVID-19 Vaccination Current Status

♣ Pfizer is the only vaccine approved for adolescents.

Emergency Use Authorization (EUA) of Pfizer vaccine for ages 12-15 approved on May 10th, 2021.

Parental consent is required for any student under age 18

♣ EUA of Moderna vaccine for this age group anticipated later this summer.

BCPH will be offering vaccination clinics with Pfizer vaccine for adolescents ages 12 and up. Adolescents may also receive Pfizer vaccine from their health care provider or pharmacy.

STAY SAFE MN-3 STEP PROCESS

Step One- As of 5-7-21:

- Removed limits and distancing requirements for outdoor dining, events, and other get-togethers, and ended the mask requirement outdoors, except at events with controlled access over 500 people. So, unless you're in a very large crowd at a formal event, you don't need to wear a mask when you're outside.
- Increasing occupancy and group size for all indoor activities and events.
- Provide recommendations for fairs, parades, and other outdoor celebrations to highlight best practices to stay safe and make summer in Minnesota great.

Face Covering Requirements

♣ As of 05/07/2021, masks will no longer be required outdoors – including during recess.

♣ Face coverings will continue to be required indoors until the statewide requirement is lifted.

Step Two: On May 28, 2021, all limits and restrictions will come to an end, including for indoor events and gatherings.

Two requirements will remain:

- Face coverings indoors and for the largest outdoor events with controlled access.
- Businesses and other venues will have plans that keep their employees safe – as they have from the beginning of the pandemic – guided by a simple universal state guidance document that will include no new requirements.

Step Three:

Once 70% of Minnesotans aged 16+ get their vaccine – but no later than July 1 – the remaining face covering requirement and the requirement for business preparedness plans will end.

What this Means for Schools

♣ The Safe Learning Plan and K12 Planning Guide—including Executive Orders 20-19, 20-82, 20-94 and 20-95— will continue to be in full effect for the remainder of the 2020-21 school year.

- ♣ Continue following the Safe Learning Plan and K12 Planning Guide until whenever the last teacher contact day is for your individual school district or charter school.
- ♣ **For year-round schools only**, the Safe Learning Plan and K12 Planning Guide—including Executive Orders 20- 19, 20-82, 20-94 and 20-95—is in effect until June 13, 2021, at 11:59 p.m.

Prom and Graduation Celebrations

- ♣ Schools should continue to follow the Entertainment and Meeting Venues: <https://staysafe.mn.gov/industry-guidance/entertainment.jsp> for celebrations such as prom and graduation that will occur before 5/28/21.
- ♣ **After 5/28/2021** events will be subject to:
 - Face coverings indoors and for the largest outdoor events with controlled access.
 - All businesses and other entities will need to have plans that keep their employees safe – as they have from the beginning of the pandemic – guided by a simple universal state guidance document that will include no new requirements. COVID-19 Universal Guidance for All Businesses and Entities: https://staysafe.mn.gov/assets/covid-19-universal-guidance-for-all-businesses-and-entities_tcm1152-480317.pdf.

Summer School:

- ♣ The COVID-19 Preparedness Plan Guidance: Requirements for all Indoor Businesses and Other Entities outlines social distancing, quarantine, contact tracing, hygiene, masking and other requirements.
- ♣ Schools should refer to this guidance as they plan and implement summer programs following the end of the school year.
- ♣ Additional health and safety recommendations for summer programming will be provided to schools in the coming weeks.

Certified Child Care, Youth Programing and Camp

- ♣ There are no changes to the requirements and recommendations included in the COVID-19 Prevention Guidance for Certified Child Care, Youth Programs, and Camps: <https://www.health.state.mn.us/diseases/coronavirus/youthguide.pdf> at this time.
- ♣ In alignment with the Governor’s announcement, all limits and restrictions on businesses will come to an end as of Friday, May 28, 2021. Then these groups will need to follow COVID-19 Preparedness Plan Guidance: Requirements for All Indoor Businesses and Other Entities.
- ♣ We encourage you to keep following all of the current requirements and recommendations w made in alignment with CDC guidance to reduce the risk of COVID in these settings, **especially among children who remain largely unvaccinated**.

What is Known?

- ♣ There are several known issues that we will continue to face and must plan for:
 - We know that children can and do spread COVID-19, and that spread can occur in school settings.
 - School staff, particularly those who are unvaccinated, will also represent a potential source for exposure in the school setting.
 - We know that the isolation period for confirmed COVID-19 cases is at least 10 days, and that when members of the school community, whether staff or student, are ill, they will need to stay home from school and activities following isolation guidance.
 - We know that children will not be fully vaccinated, particularly those under age 12, and that not all staff will be vaccinated. As a result, there will be people in the school community who are susceptible to infection when exposures occur in the school setting.
 - We know that reinfections and vaccine breakthrough infections, while rare, will happen.

What to do with any left- over staff/student saliva testing supplies:

MDE will provide guidance on this topic in the coming weeks. If you have any questions regarding staff/student saliva testing MDE requests that you email their inbox at: Covidtesting.MDE@state.mn.us

BROWN COUNTY BY THE NUMBERS

Weekly Percent of Tests by County



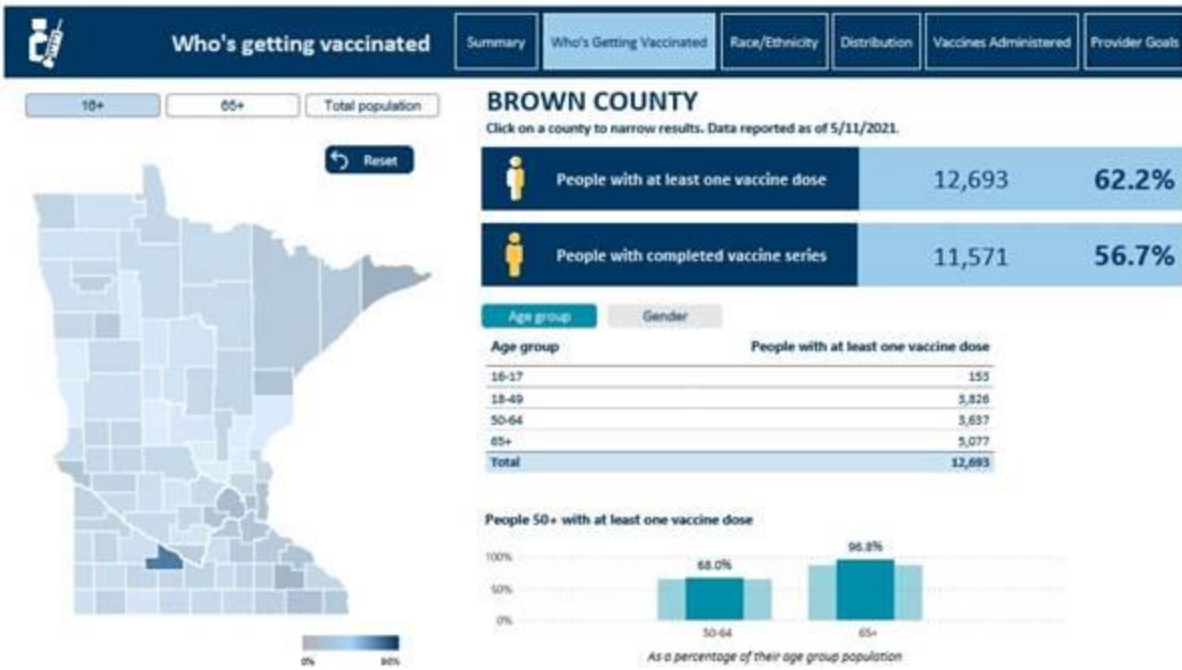
Weekly Case Rate by Count



VACCINE UPDATE

<https://mn.gov/covid19/vaccine/data/index.jsp>

Vaccine Data



As we close out another week, we wish to remind you of National School Nurse day observed this last week. We thank your school nurses along with the school leaders for all your efforts keeping our school communities safe! This has been prepared by the School Branch and Daycare leads. We hope you have a great weekend!